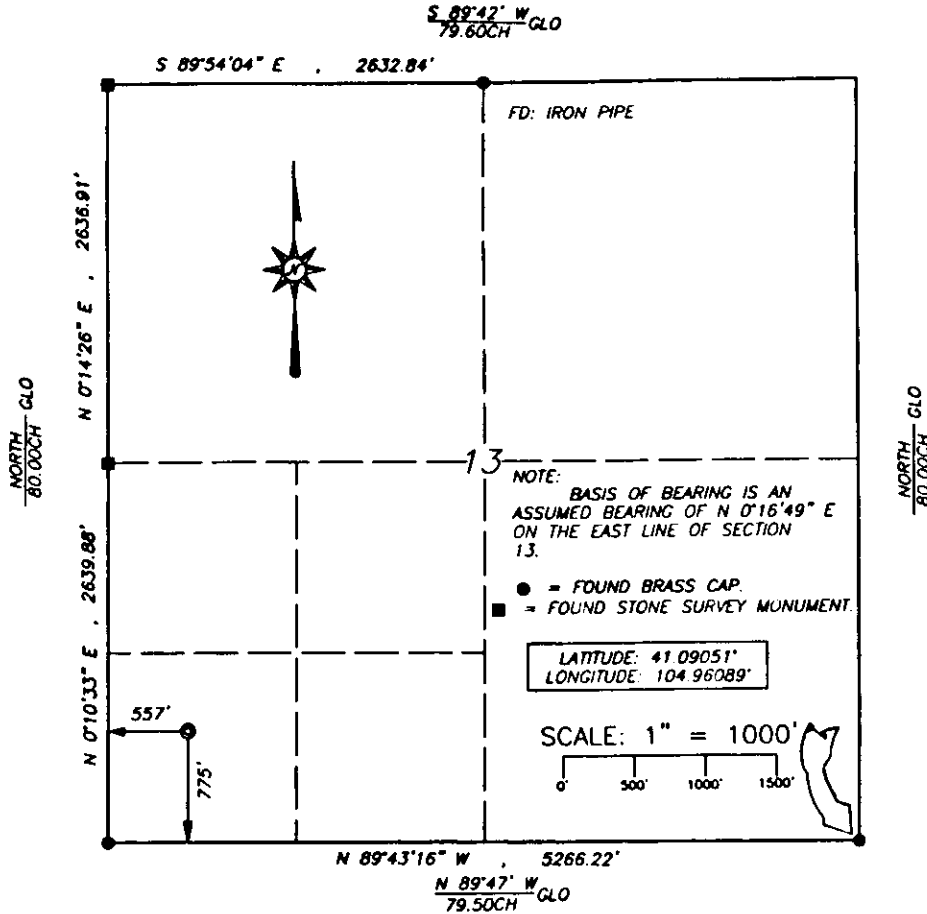


# State of Wyoming Corner Record

(In compliance with the CORNER PERPETUATION AND FILLING ACT, Wyoming Statutes, 1977, Section 36-11-101, et seq., and the Rules and Regulations of the Board of Registration for Professional Engineers and Professional Land Surveyors)

Reverse side of this form may be used if more space is needed.

Record of original survey and citation of source of historical information (if corner is lost or obliterated). Description of corner monumentation evidence found and/or monument and accessories established to perpetuate the location of this corner. Sketch of relative location of monument, accessories and reference points with course and distance to adjacent corner(s) (if determined in this survey). Method and rationale for reestablishment of lost or obliterated corner.



FOUND: BRASS CAP.

SET: NOTHING.

RECORDED 12/21/2004 AT 12:00 AM REC# 405467 JK# 1855 PG# 793  
DEBRA K. LATHROP, CLERK OF LARAMIE COUNTY, WY PAGE 1 OF 1

Date of Field Work: JAN. 23, 2004 Office Reference: JOB # 1-04

### CROSS INDEX DIAGRAM

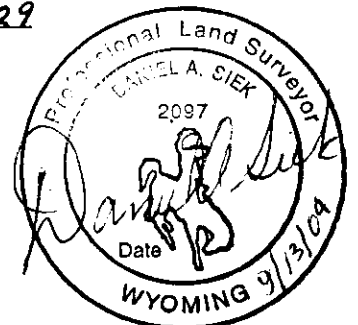
1	2	3	4	5	6	7	8	9	10	11	12	13	14	15	16	17	18	19	20	21	22	23	24
A																							
B																							
C																							
D																							
E																							
F																							
G																							
H																							
I																							
J																							
K																							
L																							
M																							
N																							
O																							
P																							
Q																							
R																							
S																							
T																							
U																							
V																							
W																							
X																							
Y																							
Z																							

Firm/Agency, Address

This corner record was prepared by me or under my direction and supervision.  
SEAL & SIGNATURE

SIK SURVEYING SERVICE  
P.O. Box 1765  
CASPER  
WY 82602

Telephone Number: (307)266-6829



Corner Name SE Section 13 T 13 R 68 6<sup>th</sup> PM Cross-Index No N-25  
SBRPE/PLS/PLSW March 1994

LARAMIE COUNTY, WY